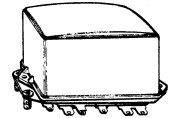
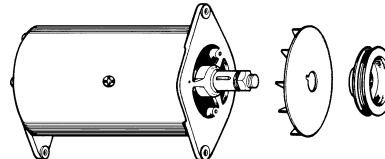
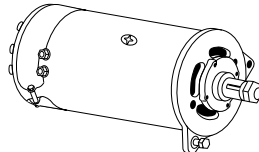
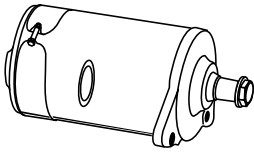




Generators



Generator/Starter/Alternator

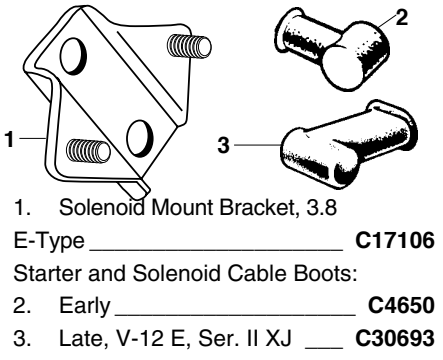
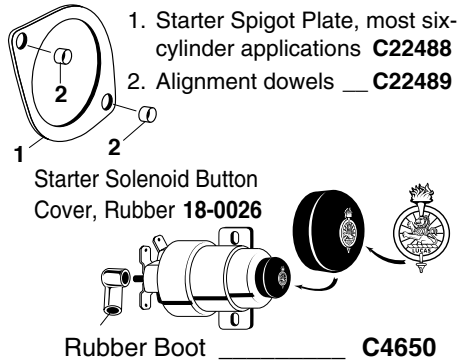
Model and Year	Generator (Rebuilt-Exchange)	Brush Set	Rear Bearing	Front Bearing	Rebuilt Regulator ¹	New Regulator ²
XK-120 (to E. W5275)	LU-22429	LU-USB100³	LU-UTB107	LU-UTB108	LU-37065	LU-NCB132⁶
'53 - '59					XK-120: LU-37076	
XK-120, 140	LU-22462	LU-USB100³	LU-UTB107	LU-UTB108	LU-37297	LU-NCB132
XK-150 '59 - '61	LU-22462⁸	LU-USB100³	LU-UTB107	LU-UTB108	LU-37297	LU-NCB132
XK-150 '59 - '61	LU-22496⁹	LU-USB100	LU-UTB107	LU-UTB108	LU-37297	LU-NCB133
E-Type, 3.8 1961	LU-22531¹⁰	LU-USB101	LU-54210144⁵	LU-UTB100	LU-37304	LU-NCB133
E-Type, 3.8 '62 - '64	LU-22902	LU-USB101	LU-54210144⁵	LU-UTB100	LU-37331	LU-NCB133
Mark VII '50 - '52	LU-22429	LU-USB100³	LU-UTB107	LU-UTB108	LU-37118	N.L.A.
Mark VII '53 - On	LU-22462	LU-USB100³	LU-UTB107	LU-UTB108	LU-37139	LU-NCB101
Without Power Steering						
Mark VIII No P/S	LU-22496	LU-USB100³	LU-UTB107	LU-UTB108	LU-37139	LU-NCB101
With Power Steering						
Mark VIII	LU-22528	LU-USB100	LU-UTB107	LU-189314	LU-37139	LU-NCB101
Non-USA after 793794						
Mark IX	LU-22528	LU-USB100	LU-UTB107	LU-189314	LU-37189	LU-NCB132
USA, 793794-on (Originally fitted w/ 22803)						
Mark IX	LU-22804	LU-USB102	LU-UTB107	NLS	LU-37301	LU-NCB133
Mark I Thru '58	LU-22462	LU-USB100³	LU-UTB107	LU-UTB108	LU-37189	LU-NCB132
Mark I 1959	LU-22496	LU-USB100³	LU-UTB107⁴	LU-UTB108	LU-37207	LU-NCB133
Without Power Steering	(LU-22496 was fitted to all "KG"-series 3.4 engines, KH.1001 to KH.8316; all "LB" 3.8 and LC.1001 to LC.5344)					
Mark II To 1963	LU-22496	LU-USB100³	LU-UTB107	LU-UTB108	LU-37297	LU-NCB133
1963 - On	(LU-22902 was fitted to 3.4 engine KH.8317-on and 3.8 LC.5345-on. LU-22900 can be substituted for LU-22902.)					
Without Power Steering						
MK II	LU-22902	LU-USB101	LU-54210144⁵	LU-UTB100	LU-37331	LU-NCB133
Thru 1963	(LU-22528 was fitted to "KG"-series 3.4, KH to 8956, all LA and LB 3.8, LC 3.8 to 5786.)					
With Power Steering						
MK II	LU-22528	LU-USB100	LU-UTB107	LU-189314	LU-37297	LU-NCB133
1964 - On	(LU-22906 was fitted to 3.4 engine KH.8957-on, 3.8 LC.5787-on. LU-22907 can be substituted for LU-22906.)					
With Power Steering						
MK II	LU-22906	LU-USB101	LU-54210144⁵	LU-189314	LU-37331	LU-NCB133
With Power Steering	Heavy Duty	(LU-22804 was supplied by special order to 3.4 MK II from engine KH.8957 and 3.8 from LC.5787.)				
MK II, 3.8S, 340	LU-22804	LU-USB102	LU-UTB107	NLS	LU-37354	LU-NCB133⁷
Manual Steering						
3.8S, 340	LU-22902	LU-USB101	LU-54210144⁵	LU-UTB107	LU-37576	LU-NCB133
Power Steering						
3.8S, 340	LU-22907	LU-USB101	N/A	LU-UTB107	LU-37576	LU-NCB133
Mark 10 3.8	LU-22804	LU-USB102	LU-UTB107	NLS	LU-37354	LU-NCB133⁷

1. In most cases, you must first supply a rebuildable core for us to rebuild. 2. All new regulators are direct Lucas replacements. They do not look exactly like the originals; unlike the original aluminum-topped voltage regulators, these replacement regulators have plastic tops. If you require an original regulator we can rebuild your old unit. 3. This part# is for 1/4" thick brushes, if you require 5/16" thick brushes, order part# LU-USB105. 5. Bushing. 6. This replacement regulator does not have the two built-in fuses like the original unit, so you must also purchase and install fuse box, part# LU-37132. 7. Adjust regulator to 35 Amps. 8. Fitted to chassis numbers 820001 to 820042; 830001 to 832087; 827001 to 827272; 837001 to 838258; 824001 to 824899; 834001 to 836221. 9. Fitted to chassis numbers 820043-on; 832088-on; 827273-on; 838259-on; 824900-on; 836222-on. 10. Fitted to LHD roadster 875001 to 875385 and coupe 885001 to 885020.

Model and Year	Starter (Rebuilt-Exchange)	Gear Reduction Starter	Brush Set	Solenoid
'49 - '61 • Manual Trans. XK-120, 140, 150 Mark VII, VII, IX	LU-26062	17-3999	LU-TAB127 ¹	LU-76445 ⁴
'56 - '61 • Auto. Trans. XK-140, 150 Mark VII, VII, IX	LU-26097	17-3998	LU-TAB127 ¹	LU-76445 ⁴
E-Type, 3.8 '61 - '64	LU-26140	17-4000	LU-TAB127 ¹	LU-76445 ⁴
E-Type, 4.2 '65 - '68	LU-25684	17-4001	LU-TAB124	LU-TOB159
E-Type, 4.2 '68 - '71	LU-26252 ²	17-4001	LU-TAB127 ¹	LU-TOB156
E-Type V-12 '71 - '72 Up to engine 7S7000	LU-26327	17-4003	LU-TAB125	LU-TOB131
E-Type V-12 '72 - '74 From engine 7S7001	LU-26381	17-4002	LU-TAB125	LU-TPB106
Mark I '56 - '59	LU-25521	17-4000	LU-TAB127 ¹	LU-76445 ⁴
'59 - '67 • Manual Trans. MK II, 3.8S, 3.8 MK X	LU-26140	17-4000	LU-TAB116	LU-76445 ⁴
'59 - '67 • Automatic Trans. MK II, 3.8S, 3.8 MK X	LU-26097	17-3998	LU-TAB127 ¹	LU-76445 ⁴
'64 - '68 420, 4.2 MK 10, 420G	LU-25684	17-4001	LU-TAB124	LU-TOB159
XJ-6 '69 - '87	LU-25684	17-4001	LU-TAB124	LU-TOB159
XJ-12 '73 - on, XJ-S 1976-on ³	LU-26381 LU-S2802	17-4002	LU-TAB125	LU-TPB106
(Permanent Magnet Gear Reduction, See Photo & Description to right)				
Lucas				
XJ-40 '88 - on (XJ-6)	LU-S3121	N/A		
Bosch				
XJ-40 '88 - 1994 (XJ-6)	LU-S2803	N/A	N/A	
"X300" XJ-6 1995-1997	LU-S2803	N/A	N/A	JA-JLM1312
"X300" XJR 1995-1997	JA-DBC6923/E	N/A	N/A	JA-JLM1312
XJ-40 & X300 XJ-12	JA-DBC6924/E	N/A	N/A	JA-JLM1521
XJ8/XJR V-8	JA-AJ8-3990	N/A	N/A	N/A
XK8/XKR	JA-AJ8-3990	N/A	N/A	N/A
S-Type V-6	JA-XR8-1587	N/A	N/A	N/A
S-Type V-8	JA-AJ8-3990	N/A	N/A	N/A
X-Type To engine E46808	JA-C2S-1396	N/A	N/A	N/A
X-Type Fm. engine E46809	JA-C2S-41471	N/A	N/A	N/A

NOTE: For some early starters, we must have your core first.

1. LU-TAB127 is a pair of brushes; some starters require four brushes, please check before ordering.
2. LU-26252 is what Jaguar originally specified for the Series II E-Type. It has been superseded by Lucas to LU-25684, which is smaller. LU-25684 can be used in place of LU-26252.
3. LU-26381 is the earliest XJ-S starter number; all numbers are now under one Lucas number.
4. LU-76445 is an original-style part. We also offer a less expensive replacement, LU-SRB325.



Gear Reduction Starters

Bring the latest in starter technology to your classic Jaguar. The advantages of these starters are: more torque with less power drain than the standard Lucas starter, and far lighter weight. Small size makes removal and installation much easier. Less expensive than a new OE starter and a better value than rebuilding worn out cores. See application table.

Starter Lead Brass Nut

Jaguar starters, to about 1967, have a large 1/4" BSF brass nut that holds the power lead. They strip easily and are often missing from starter cores. **08-0177**

Permanent Magnet Gear Reduction Starter, XJ-S

Smaller, lighter alternative with less drag than LU-26381. This version was OE on later XJ-S models. **LU-S2802**

Generator Pulleys

XK-120. This cast alloy unit is lighter and easier on generator bearings than the original cast iron pulley. **C2579**

3.8 E-Type, early, with single-groove belt. **C18227**

3.8 E-Type Generator Mount Bracket **C18228**

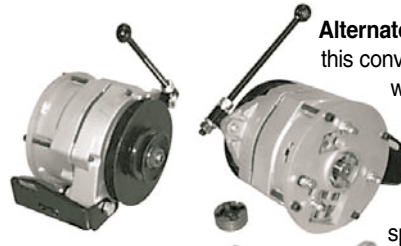
Generator Adjusting Link

For XK-120, XK-140 and 3.4 Liter XK-150 to engine V.5732; MK VII, MK VIII and MK IX with Lucas 22528 generator to VIN 793794 **C2286**
E-Type 3.8 **C18850**

Generator-to-Alternator Conversion Bracket

MK II and 3.8 E-Type **08-0399**

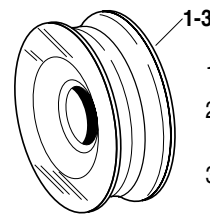
Model and Year	Alternator (Rebuilt-Exchange)	Regulator
E-Type, 4.2 '65 - '68	LU-23526	LU-NCB144
Without Air Cond.		
E-Type, 4.2 1969	LU-23579	LU-NCB144
With Air Cond.		
E-Type, 4.2 1969	LU-23526	LU-NCB144
E-Type, 4.2 '70 - '71	LU-23580	LU-NCB144
'71 - '74	Butec	Butec
E-Type V-12	LU-851353	C31526
'64 - '66		
Mark 10, 4.2	LU-23526	LU-NCB144
420 & 420G '64 - '66	LU-23526	LU-NCB144
Without Air Cond.		
XJ-6 '69 - '70	LU-23579	LU-NCB144
With Air Cond.		
XJ-6 '69 - '70	LU-23580	LU-NCB144
With A/C, no Smog Pump	Butec	
XJ-6 '70 - '71	LU-851353	C31526
XJ-6 '71 - '76	LU-23690	LU-UCB109
XJ-6 '76 - '80	LU-23869	LU-UCB104
XJ-6 '81 - '87	LU-24101	LU-UCB133
'88 - to VIN 507393	75 Amp / Int. Reg.	
XJ-40 (XJ-6)	LU-A2512 (Lucas)	LU-UCB133
VIN 507394-1992	90 Amp / Int. Reg.	
XJ-40 (XJ-6)	LU-A2515 (Bosch)	LU-UCB403
VIN 507394-1992	115 Amp / Int. Reg.	
XJ-40 (XJ-6)	LU-A2521 (Bosch)	JA-UCB403
1993-1994	120 Amp	
XJ-40 (XJ-6)	JA-DBC6819	
1995-1997	JA-DBC6819 (to VIN 787953; thru 1996)	
XJ-6/XJR	JA-LNA1800DA (VIN 787945-on; '97-on)	
	JA-LNA1800BA (XJR only)	
XJ-12 '73 - '74	LU-23783	LU-UCB109
XJ-12 '75 - '76	LU-23764	LU-UCB104
XJ-12 '77 - '79	LU-23868	LU-UCB109
XJ-12 6.0	JA-DBC11590 1994 (XJ-40 Body)	
	JA-LNA1800AA 1995-1996 (X300 Body)	
XJ-S '75 - '76 1/2	LU-23783	LU-UCB109
XJ-S '76 1/2 - '80	LU-23868	LU-UCB109
XJ-S H.E. '81 - '87	LU-A2512	LU-UCB133
'87 - '92 (to VIN 185819)	115 Amp / Int. Reg.	
XJ-S H.E. & 4.0	LU-A2521 (Bosch)	LU-UCB403
1993 VIN 185820-on	JA-DBC6819 4.0-Liter	
XJ-S	JA-DBC6820 5.3 & 6.0 Liter	
XK8/XKR thru 2002	JA-LJA1800AA	
XK8/XKR 2003-on	JA-C2C-19630	
XJ8/XJR 1998-2003	JA-LNC1800AA	
XJ8/XJR 2004-on	JA-C2C-19630	
2000-on		
S-Type V-6	JA-XR8-8577	N/A
S-Type V-8	JA-XR8-6934	N/A



Alternator Conversion for Mark II, this conversion mounts a modern one-wire alternator to the power steering pump, thus eliminating the generator and voltage regulator. The alternator has an additional spade lead for an ignition light if

desired. A must if you are considering adding air conditioning to your MK II. (XKs Unlimited will be introducing an air conditioning system in the near future.) This kit includes mounting hardware and the drive dog from the alternator to the coupler (shown). Kit is not supplied with pulleys. For later cars with "Double Groove" belt, earlier single-groove water pump and crank pulleys must be used.

Alternator Conversion Kit **08-0398**
Coupler **JA-8285**

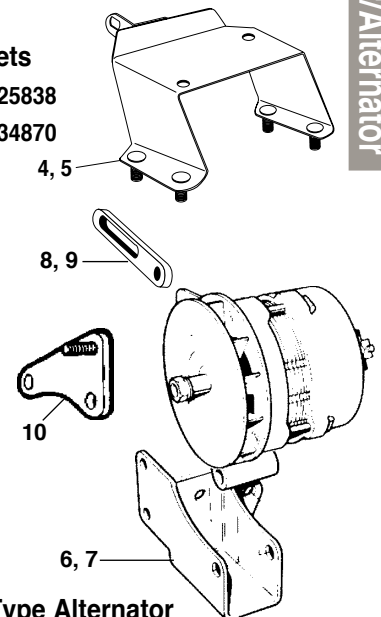
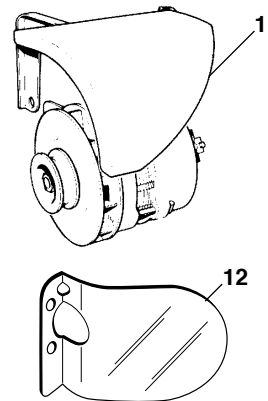


Alternator Pulleys

- 4.2 Series I E-Type **C24392**
- Series II E-Type (w/o A/C), 420, 4.2 MK X, 420G **C23123**
- Series III V-12 E-Type **C33985**

Regulator Mount Brackets

- Series II E-Type (Shown) **C25838**
- Series III E-Type **C34870**



4.2 Liter E-Type Alternator Mount Brackets and Heat Shields

- Mount Bracket, Series I (Without air conditioning) **C25158**
- Mount Bracket, Series II (without air conditioning) **C30615**
- Slotted Adjusting Arm, Early Series I **C25147**
- Slotted Adjusting Arm, Series II **C29847**
- Bracket, on water pump for alternator adjusting link, 4.2 Series I only **C24455**

Alternator Heat Shields

- Series I 4.2, top of alternator, engine 7E.6333-on, (about May 1966) finished in the original silver stove enamel. Probably retrofitted to earlier cars. **C25812**
- Spacer for above heat shield **C19706**
- Later Series II, pressed alloy shield that wraps around leading edge of front exhaust manifold **C31181**